

BioGraph Infiniti

USB Memory Stick Installation Guide



A: Thought Technology - 5250 Ferrier St., Suite 812,
Montreal, QC, Canada H4P 1L3
T: (800) 361-3651 • (514) 489-8251 **F:** (514) 489-8255
E: mail@thoughttechnology.com
W: thoughttechnology.com



Thought Technology Ltd.
5250 Ferrier, Suite 812,
Montreal, Quebec
H4P1L3 Canada
+1 (514) 489-8251
mail@thoughttechnology.com

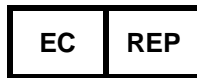
Product Name: BioGraph Infiniti Software



SA7900

Accessory to:

Device Name	Device Number
FlexComp Infiniti	SA7550
MyOnyx	SA9000
MyoTrac Infiniti (Not available in Europe.)	SA9800
ProComp Infiniti	SA7500
ProComp2	SA7400
ProComp5 Infiniti	SA7525
TPS	SA4500



EMERGO EUROPE
Prinsessegracht 20
The Hague, 2514 AP
The Netherlands

Table of Contents

Introduction	1
Welcome	1
Installing for the first time	1
Updating an existing installation	1
System Requirements for Running BioGraph Infiniti	1
Before You Begin	1
Installing the Software	2
BioGraph Infiniti and its Components	2
BioGraph Infiniti.....	2
TT-USB Device Driver	4
Blood Pressure Monitor Device Driver.....	4
BioGraph Infiniti Docs & Editors	6
Application Suites	6
Suite Activation	7
Developer Tools	8
Upgrading the Software	9
Troubleshooting the Installation	11
Other Installation Issues	12
Cancelling an Installation	12
Uninstalling BioGraph Infiniti Components	13

Manual No. SA7916 Rev. 5 (September 2019)
© copyright Thought Technology Ltd. 2003-2019

Welcome

Welcome to your BioGraph Infiniti System. Read this document before you start to install your software. It will guide you through installation of the BioGraph Infiniti software, the TT-USB driver, the Application Suites, and the Developer Tools.

We have modified the installation process to make it easier than ever to install your BioGraph Infiniti software. Installation files for BioGraph Infiniti software are now provided on a USB memory stick for quick, reliable access.

Installing for the first time

BioGraph Infiniti, the TT-USB device driver, Developer Tools, and other utilities will be installed in a single operation. Application Suites are installed separately.

Updating an existing installation

BioGraph Infiniti, Developer Tools, and the Application Suite files will all be updated in a single operation. If CardioPro Infiniti or the NeuroGuide Z-Score add-on were previously installed on your computer, their files will also be updated.

System Requirements for Running BioGraph Infiniti

Please refer to *IS7915 – Recommended Computer Requirements for BioGraph Infiniti System* for a detailed list of requirements for running BioGraph Infiniti. This document can be obtained from your dealer.

Before You Begin

- If this is a new installation, follow the instructions in [Installing the Software](#) starting on the next page. They will tell you how to install BioGraph Infiniti and its components (page 2) and the Developer Tools (page 8), as well as Application Suites (page 6).
- If you are updating an existing installation of BioGraph Infiniti, follow the instructions in [Upgrading the Software](#) on page 9.
- [Troubleshooting the Installation](#) on page 11.

Installing the Software

Important: BioGraph Infiniti and related software (such as the Application Suites), can be installed only by a user with local administrative rights, on a per-machine basis, and for **All Users**.

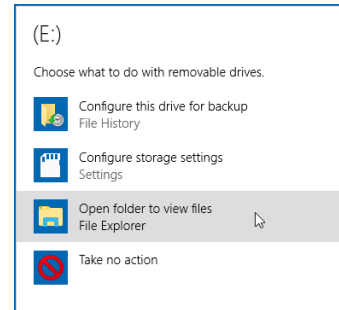
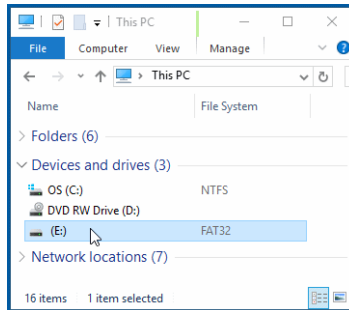
BioGraph Infiniti and its Components

These are the instructions for a new installation. If you are updating an existing installation, see page 9.

BioGraph Infiniti

1. Place the Thought Technology USB memory stick into a USB port on your computer.

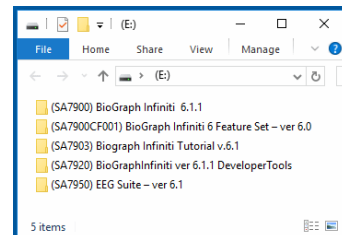
View the folders on the drive, either by browsing to the **Removable Disk** drive on your Computer, or (if AutoPlay opens) by selecting the option **Open folder to view files**.



The memory stick contains the Infiniti software and an introductory Tutorial. Depending on the software that you plan to install, the list of folders on your memory stick may differ from this screenshot.

Important: Always install BioGraph Infiniti first.

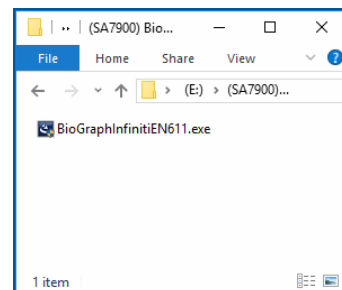
After BioGraph Infiniti has been installed, you can install the other software in any order.



2. Open the BioGraph Infiniti folder.

To start the installation, double-click the **BioGraph Infiniti** installation file.

The Setup program prepares to install the software.



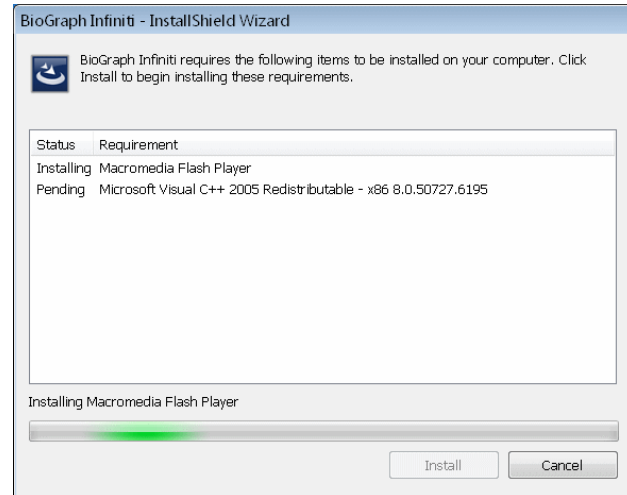
BioGraph Infiniti requires several specific software components in order to function correctly.

If they have previously been installed on your system, the Setup program goes directly to step 4.

If any of the required software components is missing, this screen opens, listing the missing components.

The BioGraph Infiniti installation cannot proceed until the missing components are installed.

3. Click **Install** to continue.



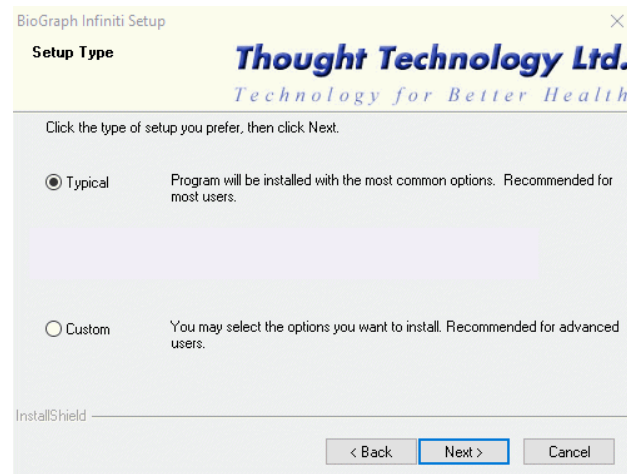
After the missing components have been installed, the Setup program continues.

4. When the Setup program is ready, it displays a **Welcome** screen. Click **Next** to start the installation. As the installation proceeds, the Setup program will instruct you to take further actions. At any point, you can click **Back** to return to the previous screen.
5. In **Customer Information**, enter or modify the user information, and then click **Next**.
6. In **License Agreement**, if you agree with the terms of the agreement, click **Yes**. If you click **No**, the installation will end.
7. In **Setup Type**, choose the installation type that you want and then click **Next**.

The default setup type, **Typical**, includes all the components needed to run BioGraph Infiniti.

We strongly recommend that you choose the Typical setup option.

Information about the Custom setup type is available in **Troubleshooting BioGraph Infiniti Installation** on page 11.



8. In **Start Copying Files**, the setup program displays the current installation settings for your confirmation.
 - To change settings, click the **Back** button.
 - If the settings are correct, click **Next** to continue.

The **Setup Status** screen opens. It displays messages and a progress bar indicating the status of the installation.

TT-USB Device Driver

- When BioGraph Ininiti has finished installing, the setup program will open the **TT-USB Device Driver Installation** window.

Note: You do not need to install the TT-USB device driver if you will use only MyoTrac Ininiti encoders.

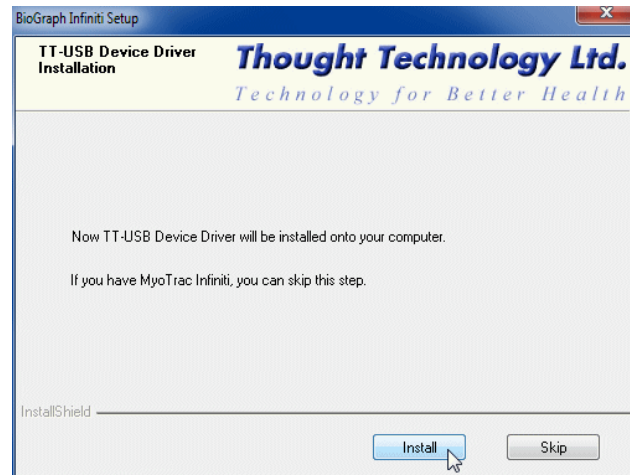
- Click **Skip** if you don't want to install the TT-USB device driver. (If you choose to install it later, instructions are on page 11.)

- Otherwise, click **Install**.

- The **TT-USB Device Driver Setup** utility will open.

Click **Next** to prepare the wizard for the installation.

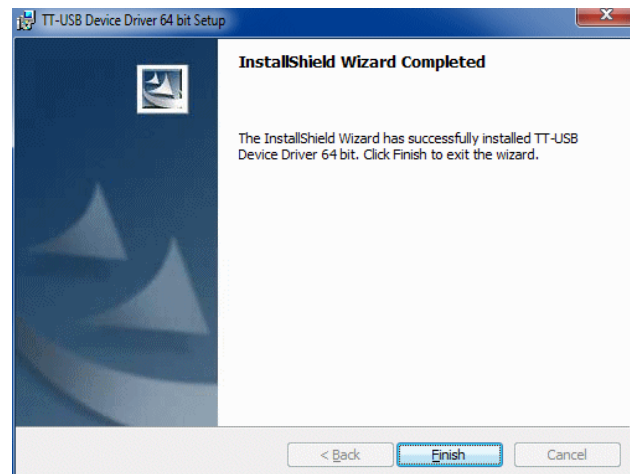
When the **Ready to Install** window opens, click **Install** to continue.



The **Installing** screen opens. It displays a progress bar indicating the status of the installation.

- When TT-USB driver setup is finished, the **InstallShield Wizard Completed** screen displays.

Click **Finish**.



Blood Pressure Monitor Device Driver

- When the TT-USB Device Driver has finished installing, the setup program will open the **Blood Pressure Monitor Driver Installation** window.

Note: You do not need to install this driver if you will not use the optional third-party blood pressure monitor.

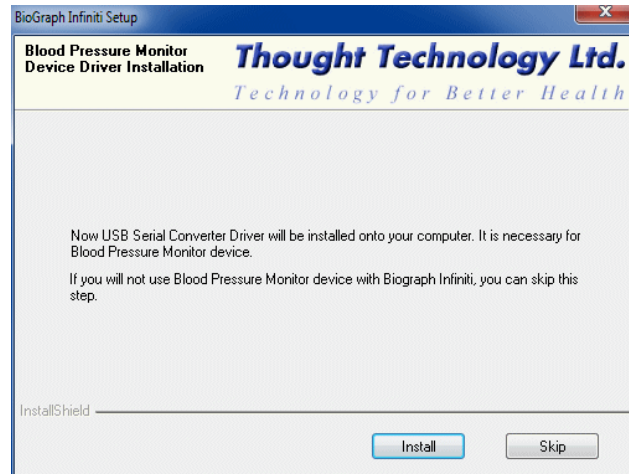
Click **Skip** if you don't want to install this driver. (If you choose to install it later, instructions are on page 11.)

Otherwise, click **Install**.

15. The **AND Serial Cable Driver Setup** utility will open.

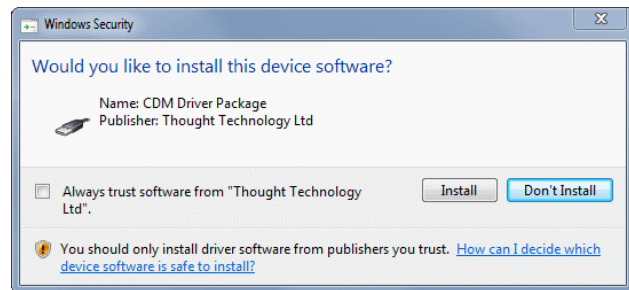
Click **Next** to prepare the wizard for the installation.

When the **Ready to Install** window opens, click **Install** to continue.



16. The Windows Security warning opens, asking you to confirm installation.

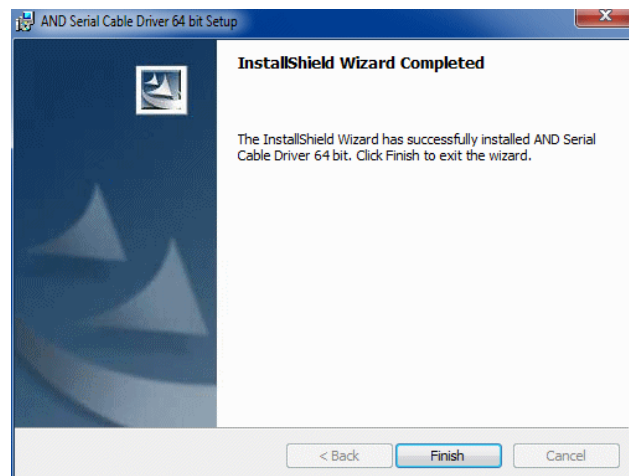
Click **Install** to continue.



The **Installing** screen opens. It displays a progress bar indicating the status of the installation.

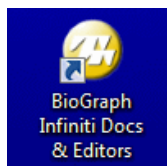
17. When AND serial cable driver setup is finished, the **InstallShield Wizard Completed** screen displays.

Click **Finish**.



The setup program places the **BioGraph Infiti** icon on your computer Desktop. Click this icon to run the program.

BioGraph Infiniti Docs & Editors



The setup program places the **BioGraph Infiniti Docs & Editors** icon on your computer Desktop.

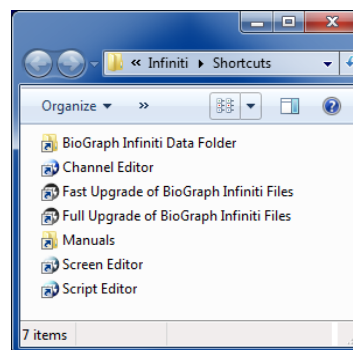
Click this icon to open the **Shortcuts** folder.

Shortcuts contains the following shortcut links:

- **BioGraph Infiniti Data Folder**, which holds subfolders that contain the media files required for running the software.
- **Manuals**, a folder containing the user manual and other documentation in PDF format.

When you install BioGraph Infiniti Application Suites, links to their user documentation are also placed in **Manuals**.

- If you have installed the BioGraph Infiniti Developer Tools, icons for opening **Channel Editor**, **Screen Editor**, and **Script Editor**.



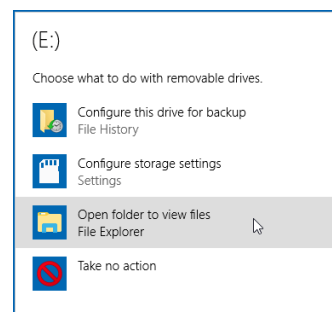
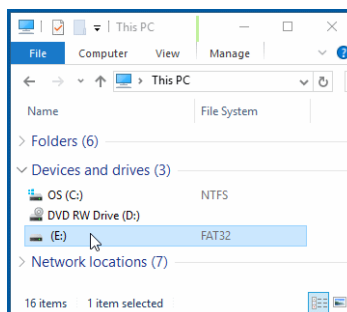
Note: In order to read the user documentation, you need a PDF reader on your computer. The Adobe Reader DC software is available free from <https://get.adobe.com/reader/othersversions/>.

Application Suites

Application Suite files are installed in the [BioGraph Infiniti Program Data](#) folder.

1. If the Thought Technology USB memory stick is not already inserted into a USB port on your computer, insert it now.

View the folders on the drive, either by browsing to the **Removable Disk** drive on your Computer, or (if AutoPlay opens) by selecting the option **Open folder to view files**.



2. Open the folder of the Application Suite that you want to install.
3. Double-click the **.exe** file for the encoder type that you will use with BioGraph Infiniti.

The Setup program prepares to install the software.

Note: The BioGraph Infiniti Feature Set includes an installation file for Media Files, as well as encoder-specific installation files. Install the Media Files before installing the encoder-specific files.

4. When the Setup program is ready, it displays a **Welcome** screen. Click **Next** to start the installation. Then follow the same installation sequence previously described for BioGraph Infiniti.
5. When the installation is finished, the **InstallShield Wizard Complete** screen displays. Click **Finish**.
6. Repeat steps 3 through 5 for each additional encoder type that you will use with your system.

If favorites have been defined for the suite, the setup program may place a **Suite Favorites** icon on your computer Desktop.


Click this icon to open a folder containing shortcuts to the Favorites defined for your Application Suite.

Favorites are predefined session configurations that contain all the settings needed for recording, replaying, and reviewing sessions. They are explained fully in the **BioGraph Ininiti Getting Started** manual.

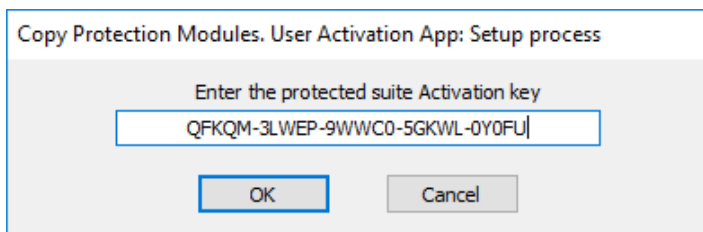
Note: *Application Suites documentation files are found by clicking the [BioGraph Ininiti Docs & Editors](#) icon on your computer desktop and following the **Manuals** shortcut. For more information about the **Docs & Editors** icon, see page 6.*

Suite Activation

Before you can use a protected suite, you must activate it. However, not all suites are protected. If you need to activate a suite, a message appears during installation.

1. Make sure that the BioGraph Ininiti application is closed.
2. Double-click on the  **BioGraph Ininiti Docs & Editors** icon on your desktop.
The Docs & Editors folder opens.

3. Double-click on the  **1st time activation of suite** icon.
The **User Activation App** window opens.

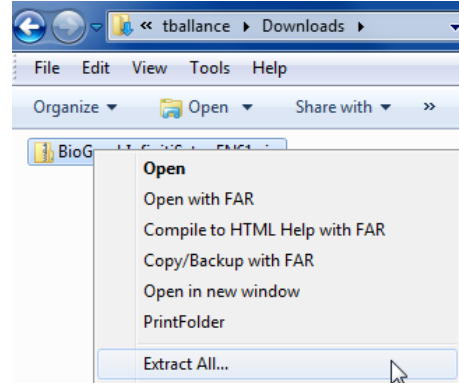


4. Enter the **Activation key** for the encoder used to record the session.
Tip: Your Suite Activation Key Code is located in the same place as your Encoder Key Code.
5. Click **OK**.
You can now use the new suite.
6. Launch BioGraph.
7. Click **Quick Start**.
8. The new suite is listed under **Categories**.

Developer Tools

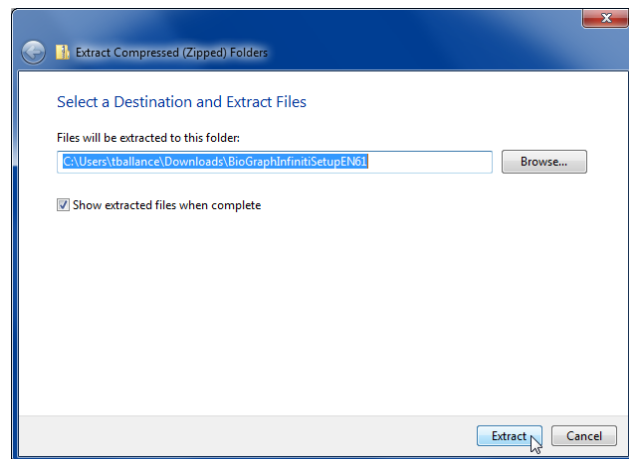
Developer Tools are installed in the same Program Files subfolder as the BioGraph Infiniti software.

1. Open the download folder, right-click the item, and select **Extract All**.



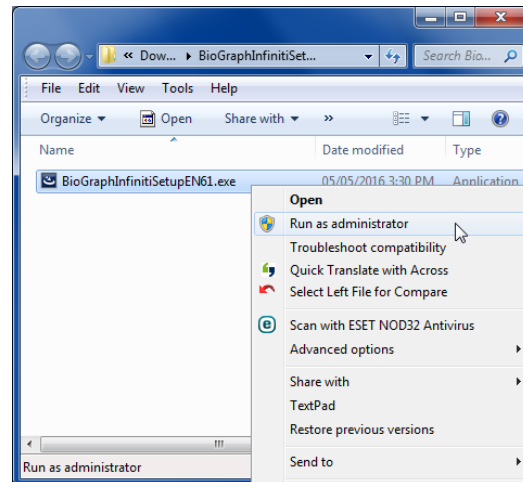
2. In the confirmation window, check **Show extracted files when complete**, and then click **Extract**.

The extraction folder will open.



3. When the extraction folder opens, right-click the **DeveloperTools** installation file, and then click **Run as administrator**.

The Setup program prepares to install the software.



- When the Setup program is ready, it displays a **Welcome** screen. Click **Next** to start the installation.

Then follow the same installation sequence previously described for BioGraph Ininiti.

Note: You access the Developer Tools icons (Channel Editor, Screen Editor, and Script Editor) through the [BioGraph Ininiti Docs & Editors](#) icon on your computer desktop. For more information about the [Docs & Editors](#) icon, see page 6.

You can also open Screen Editor from within BioGraph Ininiti. You don't need to run it from the desktop.



Upgrading the Software

Important: We recommend that you upgrade your software by launching BioGraph and selecting **Help > Check for Updates**.

You can also access the Thought Technology website ([Thought Technology](#) → [Support](#) → [Software Updates](#)) or contact your local authorized dealer.

If you don't have access to the internet, then proceed with the following steps:

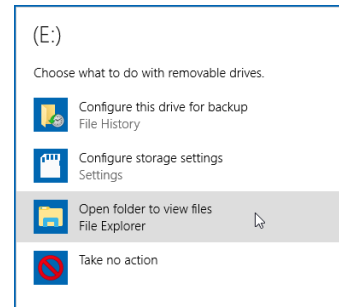
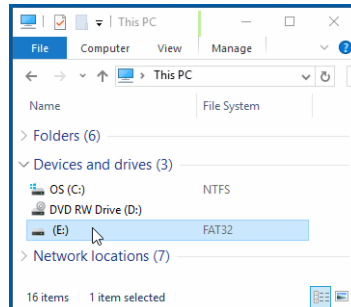
This operation will update files for BioGraph Ininiti, Developer Tools, and any Application Suites. If CardioPro Ininiti or the NeuroGuide Z-Score add-on were previously installed on your computer, their files will also be updated.

Important: Always update BioGraph Ininiti first. After BioGraph Ininiti has been updated, you can update or install the other software in any order.

For more detailed descriptions of these steps, review [Installing BioGraph Ininiti](#) on page 2.

- Place the Thought Technology USB memory stick into a USB port on your computer.

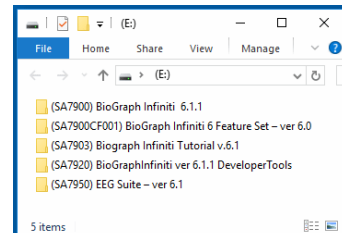
View the folders on the drive, either by browsing to the **Removable Disk** drive on your Computer, or (if AutoPlay opens) by selecting the option **Open folder to view files**.



The memory stick contains the Ininiti software and an introductory Tutorial. Depending on the software that you plan to install, the list of folders on your memory stick may differ from this screenshot.

Important: Always update BioGraph Ininiti first.

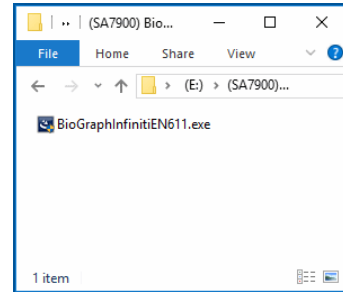
After BioGraph Ininiti has been updated, you can update or install the other software in any order.



2. Open the BioGraph Infiniti folder.

To start the update, double-click the **BioGraph Infiniti** installation file.

The Setup program prepares to update the software.

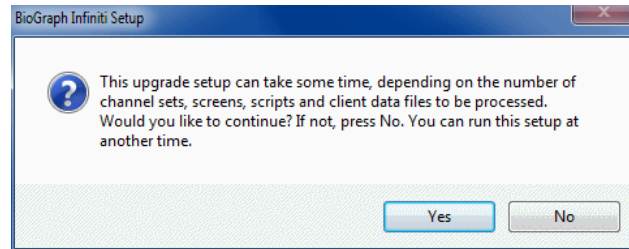


3. In the Setup **Welcome** screen, click **Next** to start the update.

4. At this point, a message prompt warns you about the possible length of the update.

Click **Yes** to continue.

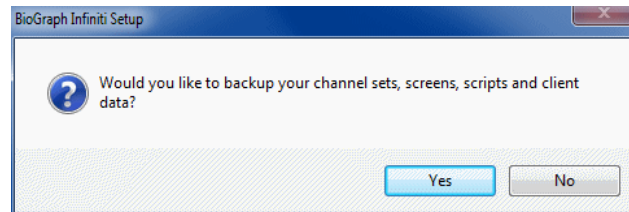
5. In **Customer Information**, click **Next**.



6. At this point, a message prompt gives you the option to back up your data.

We recommend that you click **Yes**.

Clicking **No** will continue the update, but without backing up your data.



By default, data is backed up in the folder **WINSYSDISK\Infiniti Backup\Before Ver *.* Update**. You can choose a different folder.

7. A confirmation prompt informs you that data will be copied to the backup folder. Click **OK** to proceed. A message informs you that the backup is taking place.

The **Setup Status** screen indicates the progress of the update.

8. When BioGraph Infiniti has been updated, Setup displays the **Developer Tools Update** window. Click **Update** to continue.

The **Setup Status** screen indicates the progress of the update.

9. In **InstallShield Wizard Complete**, click **Finish**.

10. If an older version of CardioPro Infiniti is installed on your system, at this point Setup displays the **CardioPro Infiniti HRV Analysis Module Update** window. Click **Update** to continue.

The **Setup Status** screen indicates the progress of the update.

11. In **InstallShield Wizard Complete**, click **Finish**.

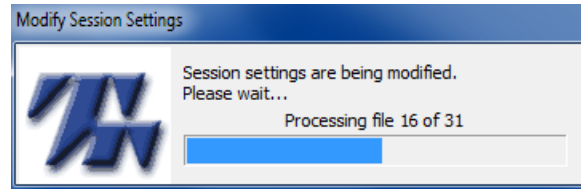
12. If an older version of the NeuroGuide Z-Score add-on is installed on your system, at this point Setup displays the **NeuroGuide Z-Score Add-on Update** window. Click **Update** to continue.

The **Setup Status** screen indicates the progress of the update.

13. In **InstallShield Wizard Complete**, click **Finish**.

14. Following the initial update, Setup processes scripts, screens, channel sets, client data and other files used by BioGraph Ininiti.

A series of screens similar to this shows its progress.



15. When processing is complete, Setup gives you the option to create thumbnail images of screens. Click **Yes** to run the utility.

Thumbnail creation can occur only if thumbnails do not already exist in your BioGraph Ininiti installation. If thumbnails already exist, nothing happens when you click **Yes**.

Note: *Updating from a version older than BioGraph Ininiti 6.0 will overwrite any existing calibration information recorded by the Sensor Calibration Wizard. The first time you use the updated software, recalibrate your sensors by selecting **Sensor Calibration** from the **Hardware** menu in the Main Frame Screen.*

Troubleshooting the Installation

These troubleshooting hints will help you during BioGraph Ininiti installation.

Issue:

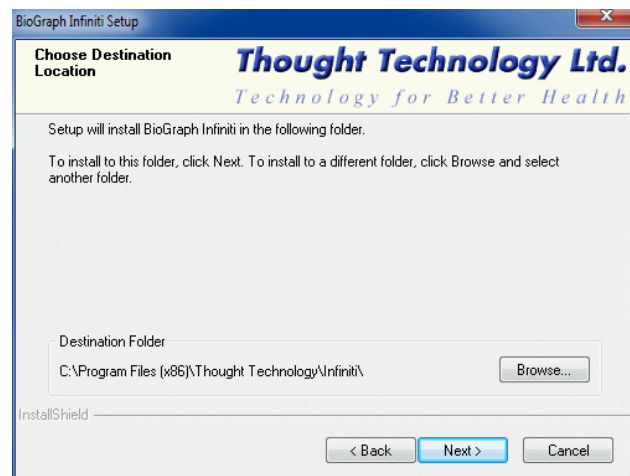
I want to know how the **Custom** setup differs from the **Typical** setup.

Explanation:

Custom setup lets you install the BioGraph Ininiti executable in a different location from the default **Program Files** folder.

Application suites and media files are always installed in the **C:\ProgramData** folder.

- In **Setup Type**, select **Custom** and click **Next** to open **Choose Destination Location**.
- Click **Browse** to open the **Choose Folder** browser, locate and select the folder where you want to install the software, and click **OK**.

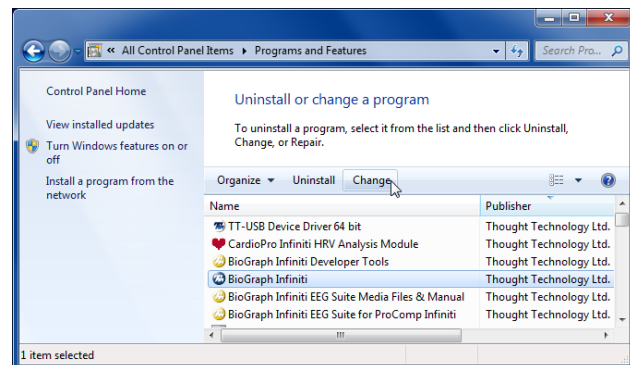


Issue:

I didn't install the TT-USB Device Driver or the Blood Pressure Monitor Device Driver when I installed BioGraph Ininiti. Now I want to install the missing component.

Solution:

1. Go to **Programs and Features** in the Windows **Control Panel**.
2. Select BioGraph Ininiti and click **Change**.
3. In the **Welcome** screen, select **Modify** or **Repair** and then click **Next**.



4. The **Program Maintenance** utility will validate the existing installed components, and open installation windows for any missing components.

The modification sequence is the same as previously described for installing BioGraph Infiniti.

Issue:

I installed the most recent version of BioGraph Infiniti, and now I want to install an Application Suite with a version number earlier than 5.0.

Explanation:

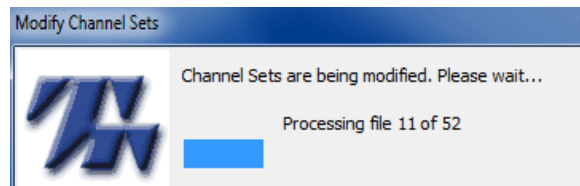
The file structure used by the most recent version of BioGraph Infiniti is different from the structure used by versions prior to 5.0, so it is not directly compatible with older Application Suites. You need to run an upgrade utility in order to update the file structure if the Application Suite has a version number earlier than 5.0.

Solution:

After you have installed the older Application Suite, do the following.

1. Double-click the **BioGraph Infiniti Docs & Editors** icon to open the **Shortcuts** folder.
2. Right-click the command **Full Upgrade of BioGraph Infiniti Files** and run it **As Administrator**.

A series of screens similar to this shows the progress of the update.



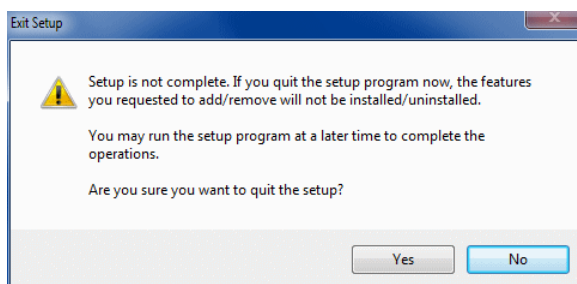
3. When updating is complete, the upgrade utility gives you the option to create thumbnail images of screens.

Note: *Thumbnail creation will occur only if thumbnails do not already exist in your BioGraph Infiniti installation. If thumbnails already exist, nothing happens when you click **Yes**.*

Other Installation Issues

Cancelling an Installation

If, during the installation of a component, you need to stop the installation, click **Cancel**. Setup prompts you to confirm the command.



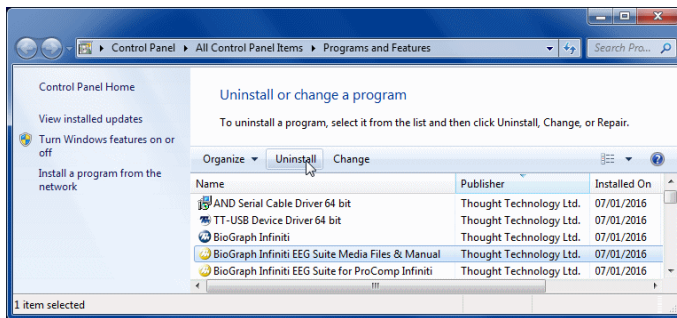
- To stop the installation, click **Yes**.
- To continue the installation from the point where it was interrupted, click **No**.

Important: *Once Setup has started to install files on your computer, it is best to let the process run and uninstall the application or component afterward. Otherwise, you must delete the files manually.*

Uninstalling BioGraph Infiniti Components

If you decide to remove the BioGraph Infiniti software, Application Suites, Developer Tools, or TT-USB Device Driver from your system, we recommend doing this from **Programs and Features** in the Windows **Control Panel**.

1. Select the BioGraph Infiniti application or component to remove.
2. Click **Uninstall**.

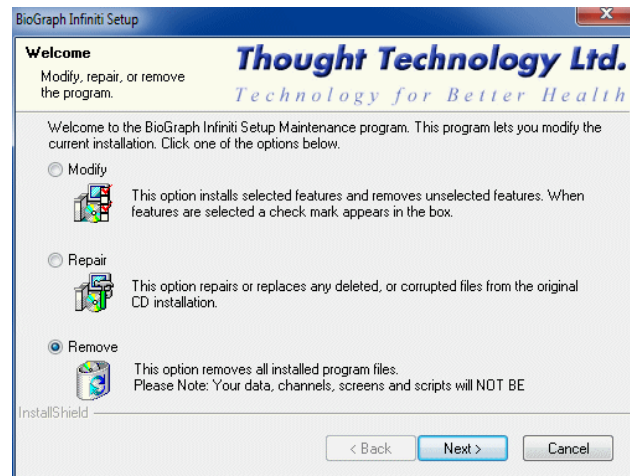


At this point:

- If you are uninstalling the TT-USB Device Driver, a confirmation prompt opens. Click **Yes**.
- If you are uninstalling any other component, the Setup Maintenance program opens and prepares to uninstall the component. Go to the next step.

3. When the Setup Maintenance program is ready, it displays a **Welcome** screen. Select **Remove** and click **Next** to start uninstalling the component.
4. At the confirmation prompt, click **OK**.
5. After the component is removed, click **Finish**.

Note: *It is always wise to restart your computer after uninstalling any software component.*



Uninstalling a BioGraph Infiniti application or component removes all installed program files. It will **not** remove client data, channel sets, screens, or scripts. This is to prevent the unintentional deletion of clinical information.

Important: *If you need to remove these files, please contact your authorized dealer or Thought Technology Technical Support at +1 (514) 489-8251.*