

Third-party BLOOD PRESSURE device - Instructions

BioGraph Infiniti provides interface to the following 3rd party blood pressure monitors.

- UA-767PC monitor from A&D Medical

Ordering

UA-767PC monitor



From A&D, click [here](#).

From Amazon, click [here](#). We recommend ordering from Amazon.

If this link does not work, search for “UA-767PC monitor” on www.amazon.com

ADAPTER” KO3057 for USB

USB cable for the UA-767PC (necessary to use with BioGraph Infiniti):



From Amazon, click [here](#)

If this link does not work, search for “ADAPTER” KO3057 for USB” on www.amazon.com

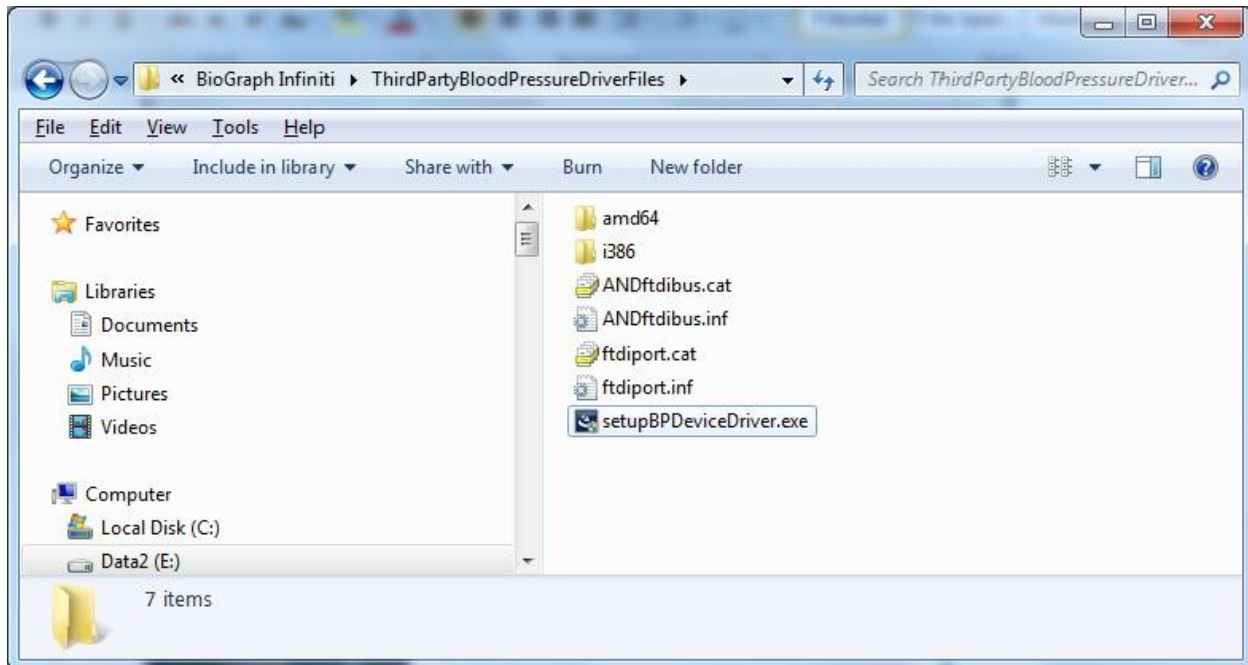
Installation

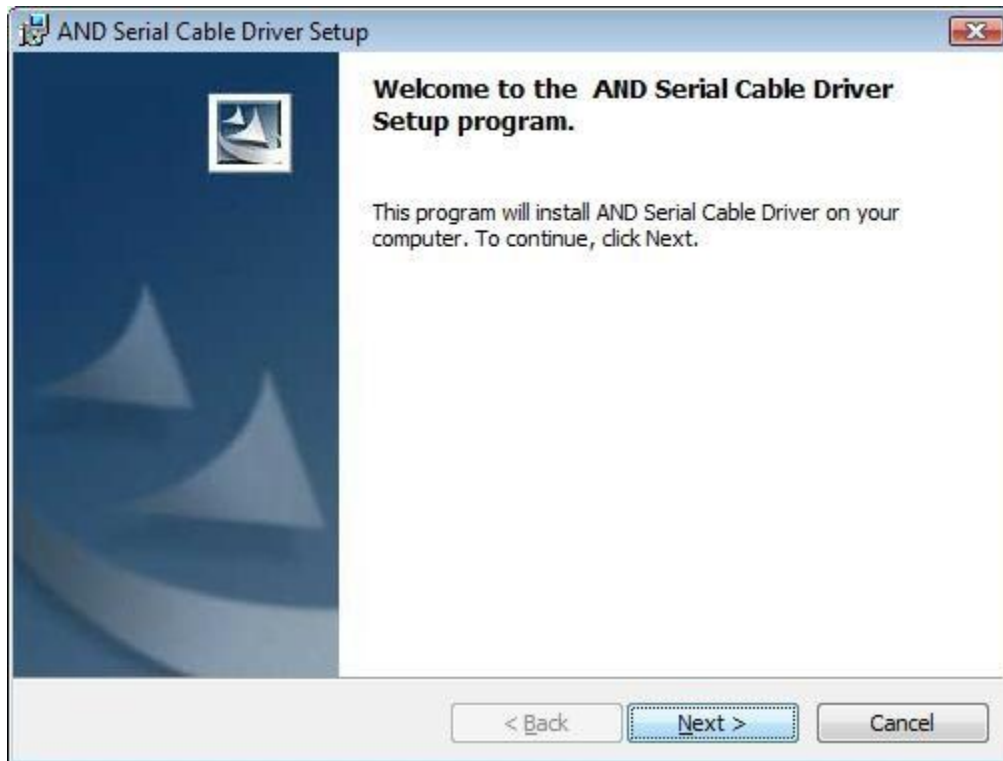
From BioGraph Infiniti installation CD:

- Browse the CD and locate the ThirdPartyBloodPressureDriverFiles folder
- Double click setupBPDeviceDriver.exe file

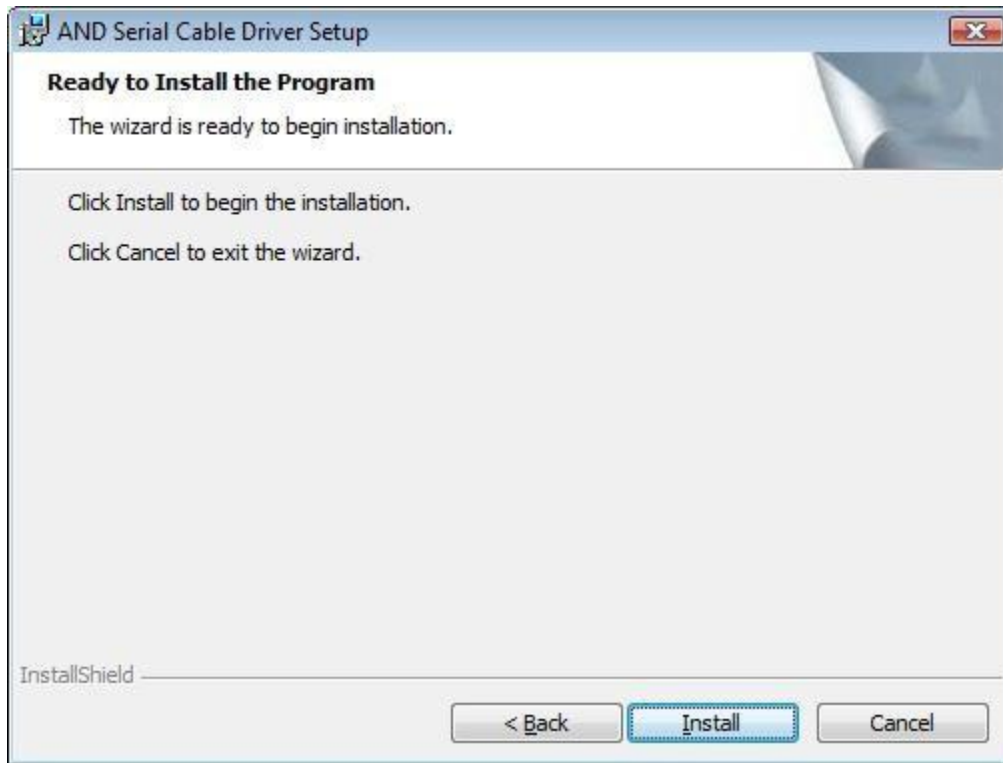
If you are upgrading from our web page:

- Scroll down to **Blood Pressure Device (AND UA-767PC)** and click Download the Blood Pressure Device Driver, or click [here](#).
- Download and save setupBPDeviceDriver.exe then double click on the file to launch the installation.

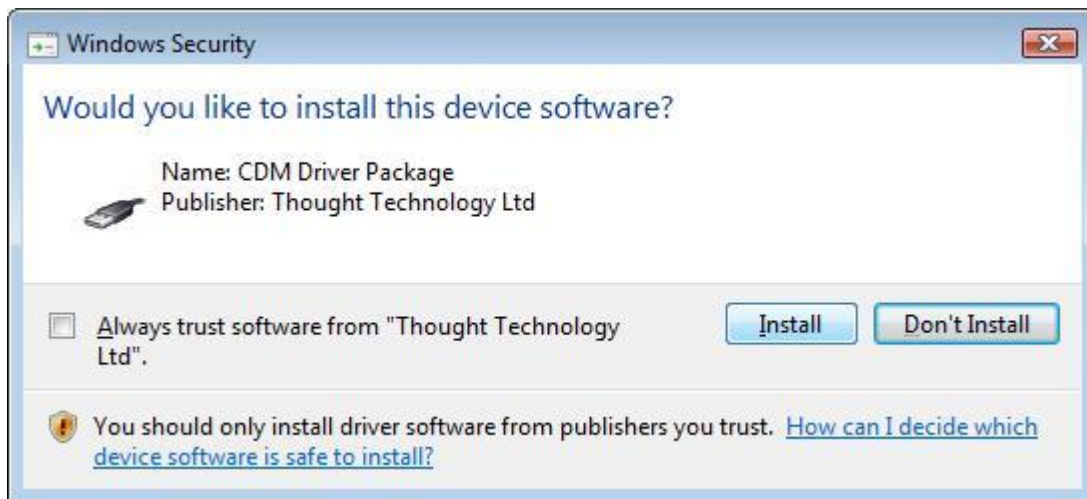




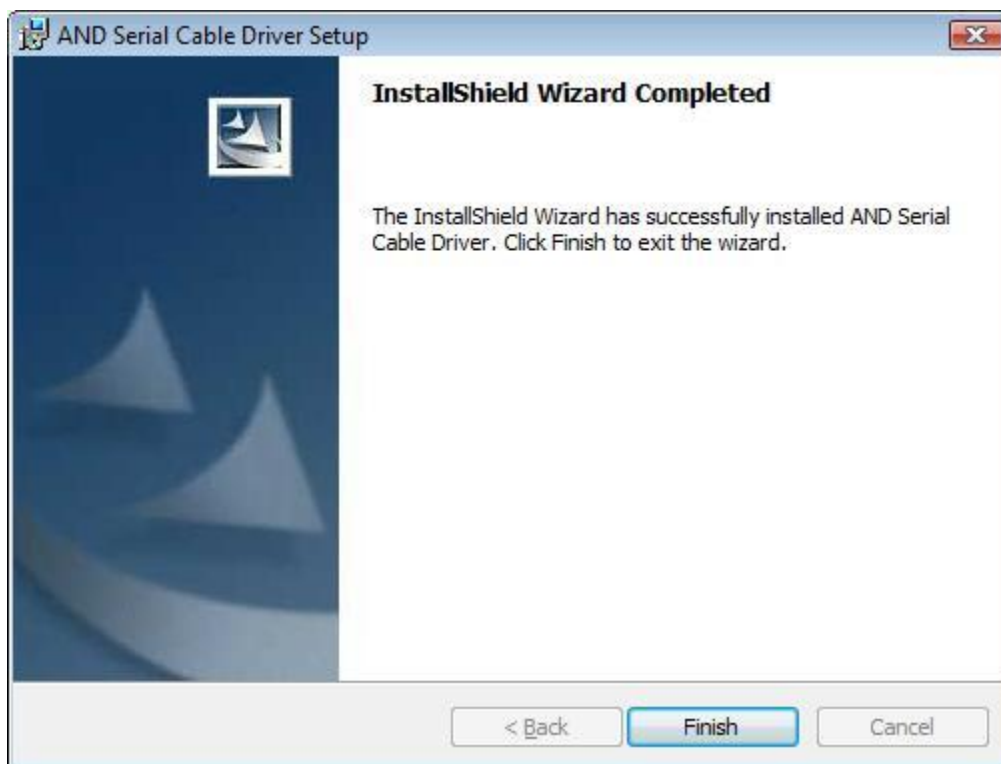
Click **Next**.



Click **Install**.



Click **Install**.



Click **Finish**.

Connect the Blood Pressure device to your PC using the USB cable. After a brief sequence of messages confirming the status of the installation, the device will be ready for use by BioGraph Infiniti software.

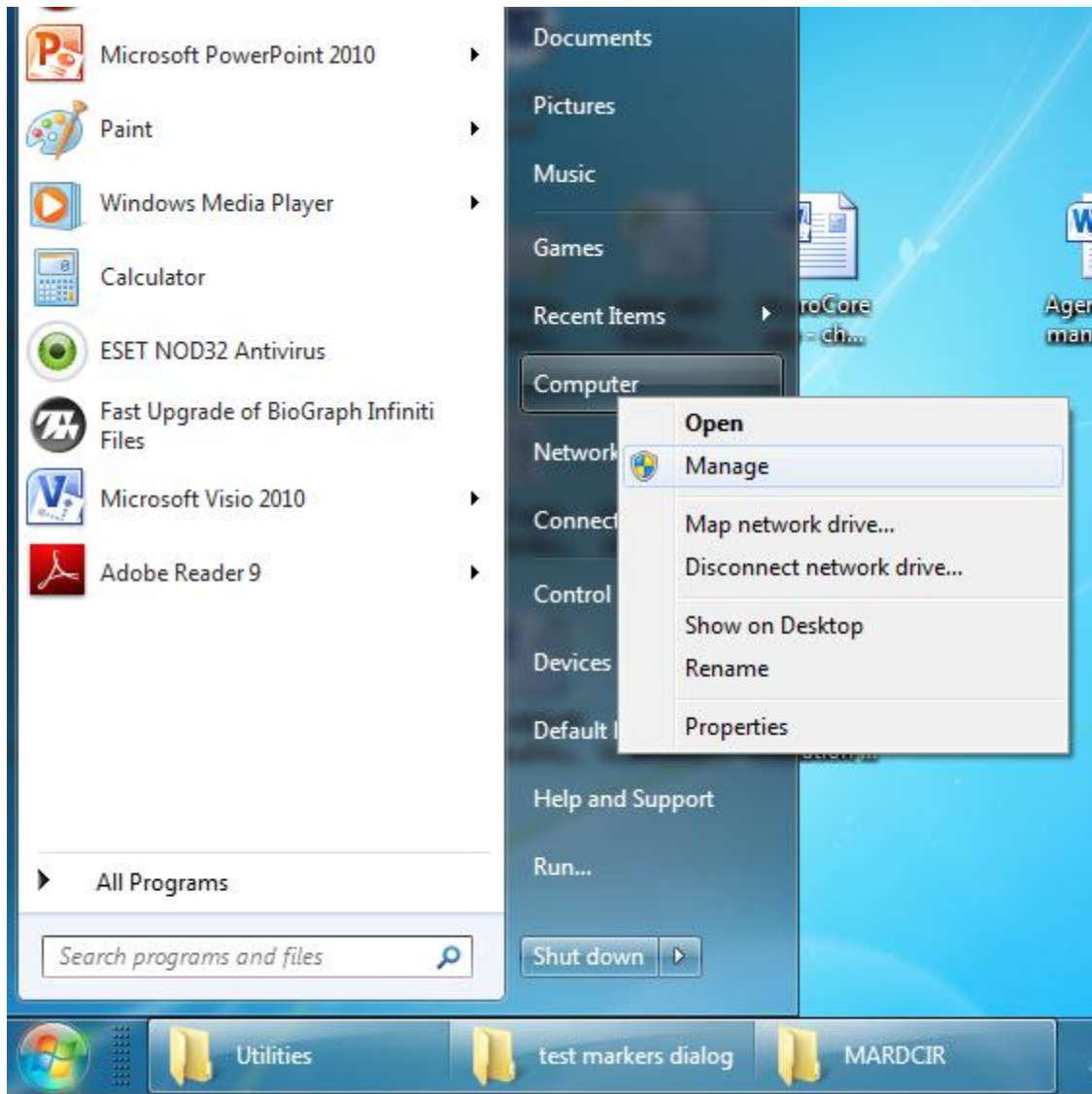
Usage with BioGraph Infiniti software

1. In the BioGraph 6 Feature Set, there are two training screens programmed to use the blood pressure device (*Physiology and Blood Pressure – Training* and *HRV and Blood Pressure – training*). These are programmed so that pressing the F11 key on your keyboard will trigger the blood pressure device to take a reading. When the reading is ready, it will be displayed in the BioGraph Infiniti screen and stored with the session.
2. For Developers: there are other ways BioGraph Infiniti can activate a blood pressure reading. For more information, refer to the Channel Editor online help.

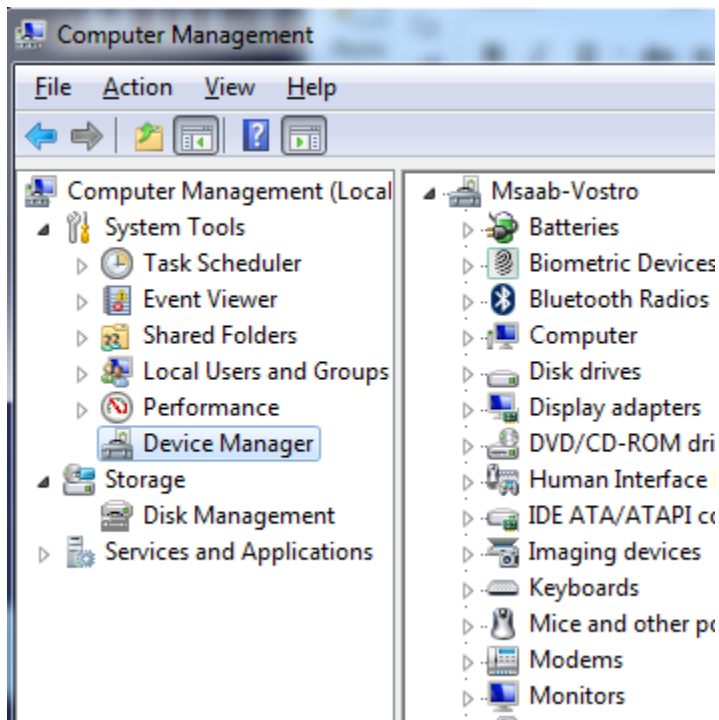
Troubleshooting

If you have correctly installed the driver and have loaded a BioGraph Infiniti screen correctly configured to operate the blood pressure device, and the device is still not functioning properly, you may have a driver conflict. This may be because the AND HealthVault Driver from A&D Medical has already been installed on your PC.

To verify this, open the Windows Device Manager (from the Windows Start Menu, right click Computer and select "Manage").



Select “Device Manager” under System Tools, the leftmost panel.



Scroll down to “Portable Devices”. If “AND Digital Blood Pressure Monitor” appears, right click and select “disable”. If necessary, this can be enabled following the same steps after use of the device with BioGraph Infiniti.

