

# FlexComp Infiniti

## Hardware Manual



### ***TT Thought Technology Ltd.***

8205 Montreal/Toronto Blvd., Suite 223, Montreal West, QC H4X 1N1 Canada

Tel: (800) 361-3651 • (514) 489-8251 Fax: (514) 489-8255

E-mail: [mail@thoughttechnology.com](mailto:mail@thoughttechnology.com)

Webpage: <http://www.thoughttechnology.com>



0413

**The Manufacturer:** Thought Technology Ltd.  
8205 Montreal/Toronto Blvd., Suite 223  
Montreal West, Quebec, Canada  
H4X 1N1

**Product Name:** FlexComp Infiniti System

**Product No:** T7550M, T7555

**Device Name:** FLEXCOMP INFINITI ENCODER

**Device No:** SA7550



EMERGO EUROPE  
Molenstraat 15, 2513 BH,  
The Hague, The Netherlands  
Tel: +31.70.345.8570  
Fax: +31.70.346.7299

## CLASSIFICATION



- Type BF Equipment
- Internally powered equipment
- Continuous operation
- Read Instruction Manual.

## CAUTION

- US Federal Law restricts this device to sale by or on order of licensed health care practitioners.

## WARNING

- Do not operate active sensors within 10 feet (3m) of an operating cellular phone, similar radio transmitting device, other powerful radio interference producing sources such as arc welders, radio thermal treatment equipment, x-ray machines or any other equipment that produces electrical sparks.
- All encoders are totally isolated from line (110 or 220VAC) power due to battery operation and fiber optic connections to computers. However, many hospitals and the FDA require that computers, printers and any other equipment used with medical devices be electrically isolated from line voltage to UL or CSA medical safety standards.
- Do not connect inputs or outputs of the encoder or sensors to line powered devices, except through the fiber optic cable.
- The PC used with FlexComp Ininiti must be placed outside the patient/client environment (more than 3 meters or 10 feet) or the PC must comply with EN60601-1.1 (system safety).
- After use, the disposable electrodes may be a potential biohazard. Handle and, when applicable, dispose of these materials in accordance with accepted medical practice and any applicable local, state and federal laws and regulations.
- To diminish the risk of spreading communicable diseases, always use good hygiene practices with reusable EMG electrodes, particularly if abrasive substances are used. In all cases, refer to your facility's infection control procedure.
- Do not use in the presence of a flammable anesthetic mixture with air or with Oxygen or Nitrous Oxide.
- Not to be immersed in water.
- Take care in arranging patient and sensor cables to avoid risk of patient entanglement or strangulation.
- The operator is responsible for ensuring the safety of any devices controlled or triggered by Ininiti equipment or software, or by any software or hardware receiving data from Ininiti equipment. Ininiti equipment must not be configured or connected in such a way that failure in its data acquisition, processing or control functions can trigger patient feedback stimulus that poses an unacceptable level of risk.
- Use of any equipment in a biofeedback context should be immediately terminated upon any sign of treatment-related distress or discomfort.
- Not to be connected to a patient undergoing MRI, Electro surgery or defibrillation.

## ATTENTION

- To prevent static discharge from damaging the sensor and/or encoders, use anti-static mats or sprays in your working area. A humidifier may also be used to help prevent static environments by conditioning hot, dry air.
- Not for diagnostic purposes. Not defibrillator proof. Not for critical patient monitoring.
- To prevent voiding warranty by breaking connector pins, carefully align white guiding dot on sensor plug with slot on sensor input.
- Make sure to remove electrodes from sensor snaps immediately after use.
- Apply conductive gel only to electrodes. Never put gel directly on sensor snaps.
- Always use electrodes between the subject and the sensor.

- Sharp bends or winding the fiber optic cable in a loop smaller than 4 inches (10cm) may damage the cable.
- A fiber optic cable not fully pushed into its receptacle may cause the unit not to operate. Make sure that both ends of the cable are fully inserted into their receptive jacks and the nut is tightened firmly.
- Do not plug third party sensors directly into instrument inputs. Plug only Thought Technology active sensor cable connectors into instrument inputs. All EMG electrodes and third party sensors must be connected to active sensors, either directly or through an adapter.
- Remove batteries when the device is not being used for extended period of time. Please dispose of battery following national regulations.

#### INTENDED PURPOSE

- Biofeedback, relaxation and muscle re-education purposes.

#### CONTRAINDICATIONS

- None.

#### NOTE

- No preventative inspections required. Maintenance must be performed by qualified personnel.
- The supplier will make available, upon request, circuit diagrams, component parts lists and description or other information required for the repair of product by qualified personnel.
- If a fiber optic or patient cable is damaged or breaks, please replace it.
- Due to the essential performance and intended use of the device, testing for immunity to electromagnetic disturbances was not required and was not performed. The device may be susceptible at levels below IEC60601-1-2 immunity test levels.
- The operator must be familiar with typical characteristics of signals acquired by this equipment, and be able to detect anomalies in the acquired signal that could interfere with treatment effectiveness. Depending on the importance of signal integrity, it may be advisable to continuously monitor the raw signals, in time and/or frequency domain, while the device is being used for biofeedback or other purposes. If anomalies are observed on acquired signals, and if you suspect a problem with electromagnetic interference, contact Thought Technology for a technical note on identification and remediation.

#### MAINTENANCE AND CALIBRATION

- Wipe encoder with a clean cloth.
- Factory testing and calibration ensure equipment accuracy and frequency response. The user may invoke a self-calibration function that will recalibrate certain device parameters (see the **Self-Calibration** section of this manual). Contact Thought Technology for factory recalibration if necessary.

#### STORAGE

- Store in its original case at up to 90% humidity / 85°F (30°C).

#### TRANSPORTATION

- Transport in its original case.

Guidance and manufacturer's declaration – electromagnetic emissions		
The Ininiti system is intended for use in the electromagnetic environment specified below. The customer or the user of the Ininiti system should assure that it is used in such an environment.		
Emissions test	Compliance	Electromagnetic environment – guidance
RF emissions CISPR 11	Group 1	The Ininiti system uses RF energy only for its internal function. Therefore, its RF emissions are very low and are not likely to cause any interference in nearby electronic equipment.  The Ininiti system is suitable for use in all establishments, including domestic establishments and those directly connected to the public low-voltage power supply network that supplies buildings used for domestic purposes.
RF emissions CISPR 11	Class B	
Harmonic emissions IEC 61000-3-2	Not applicable	
Voltage fluctuations/flicker emissions IEC 61000-3-3	Not applicable	

SA7560 Rev. 4

© 2003-2011 Thought Technology Ltd.

# Table of Contents

<b>About the FlexComp Infiniti Encoder</b>	<b>1</b>
General description	1
Connecting the hardware	2
Connecting the TT-USB interface unit	2
Connecting sensor cables	2
Setting the communication protocol	3
General instructions for use	3
Electrical interference	4
After use	4
Changing the batteries	4
Opening the compartment	4
Polarity	4
Closing the compartment	4
Monitoring the battery level	4
Caring for the fiber optic cable	4
Winding or bending	4
Cutting the fiber optic cable	5
Self-calibration	5
Running a self-calibration	5
Notes about self-calibration	5
Self calibration condition codes	6
Impedance checking	6
Checking impedance	6
Notes about impedance checking	6
Impedance checking condition code	7
Compact Flash card	7

Formatting the Compact Flash card	7
Preparing the Compact Flash for use with your encoder	8
Encoder time setting	9
Questions and answers about Compact Flash time setting	9
Compact Flash memory usage	9
Compact Flash card error codes	10
Recording data to a Compact Flash	10
<b>Hardware Specifications</b>	<b>12</b>
FlexComp Infiniti (SA7550)	12
Infiniti hardware copyright notice	12
<b>Reference</b>	<b>14</b>
Warranty	14
Optional extended warranty	14
Contacting Thought Technology	14
Placing orders	14
Technical support	14
Returning equipment for repair	14
Repair return form	16





# About the FlexComp Infiniti Encoder

The FlexComp Infiniti (SA7550) comes with the following components.

- One ten-channel FlexComp Infiniti encoder unit.
- One TT-USB interface unit.
- A supply of fiber optic cable (1' and 10' cables).
- Four alkaline AA batteries.

## General description



The FlexComp Infiniti is a ten (10) channel, multi-modality device for real-time computerized psychophysiology, biofeedback and data acquisition. It has 10 protected pin sensor inputs.

The microprocessor-powered FlexComp Infiniti encoder is able to render a wide and comprehensive range of objective physiological signs used in clinical observation and biofeedback and can act as an adjunct to client evaluation, assessment, prognosis, and rehabilitation.

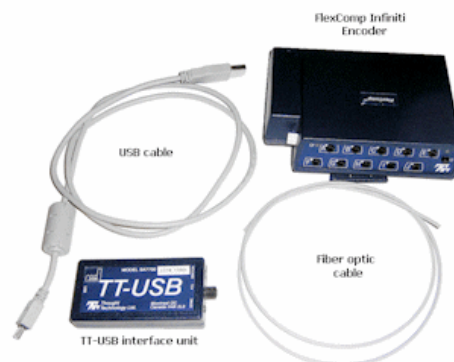
Sensors, connected to the FlexComp Infiniti encoder by protected pin cables, measure biofeedback responses and send the raw signals to the encoder. Depending on the software being used, these may include sensors specialized for electromyography (EMG), electroencephalography (EEG), electrocardiography (EKG), skin temperature, skin conduction, respiration, or blood volume pulse (BVP). The document **Sensors and Accessories SA7511** contains a complete list of Thought Technology sensors that can be used with the FlexComp Infiniti.

The FlexComp Infiniti encoder samples the incoming signals, digitizes, encodes, and transmits the sampled data to the TT-USB interface unit. A fiber optic cable is used for transmission to the TT-USB, providing maximum freedom of movement, signal fidelity, and electrical isolation.

The TT-USB interface unit is connected to one of the host computer's USB ports. It receives the data arriving from the FlexComp Infiniti in optical form and converts it into the USB format to communicate with the software.

**Note:** Some hardware features may not be supported by all software programs. Consult the software manual for a full list of features supported.

Some software programs will not function with a TT-USB, but require use of a PRO-SB in its place.



Unconnected hardware components

## Connecting the hardware

### Connecting the TT-USB interface unit



Insert one end of the fiber optic cable carefully into the fiber optic port on the encoder. Tighten the nut gently so that the cable won't slip out.

Do the same with the other end of the fiber optic cable and the fiber optic port of the TT-USB interface unit.



**Note:** The fiber optic connectors may break if they are hit directly, for instance, if the encoder falls onto the floor. To prevent damage, it is recommended to use the encoder belt clip to fasten it to the client or to a chair.



Insert the small connector of the USB cable into the USB port on the TT-USB interface device.

Insert the large connector of the USB cable into the USB port of your PC.



USB ports on a PC are generally located at the back of the base unit. You may also find a USB port at the front of your base unit; you can connect the other end of the USB cable to it. On a laptop, USB ports are usually located at the side or the back of the laptop.



Connected hardware components

The TT-USB interface device has two additional optional connection options.

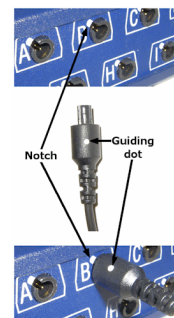
- The **Switch** is a 3.5mm jack for connecting external devices such as a muscle stimulation device. This can be used, for example, with the Switch control feedback option in the BioGraph Infiti software.
- The **Sync** connector permits the use of a sync cable to connect an additional TT-USB interface device in order to synchronize data between units. The Sync connector can also be used for an event input.

### Connecting sensor cables

Numerous regulatory bodies (such as the FDA in the USA) have adopted safety specifications requiring that all medical products for physiological monitoring be manufactured with electrode leads that have no exposed metal plugs.

For this reason, the FlexComp Infiti encoder and Thought Technology sensors use specially designed connectors that have all metallic surfaces recessed within the plastic casing. These connectors, with protected pins, require care when you are plugging and unplugging sensor cables to the encoder or an extender cable to the sensor head.

When connecting a sensor cable to the FlexComp Infiti, make sure to properly line up the guiding dot on the top of the plug with the notch in the encoder input socket, as shown in the illustration. Forcing the plug into the jack in any other position may damage your equipment.



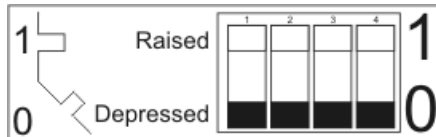
## Setting the communication protocol

The FlexComp Infiniti supports several communication protocols. The communication protocol is set with the dipswitches located on the bottom of the unit to the left of the belt clip.

With the front of the encoder facing up, verify that the switches are set properly for the software and interface unit that you are using. You may have to change the communication protocol to the correct setting.

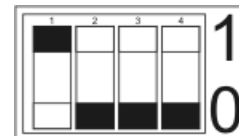
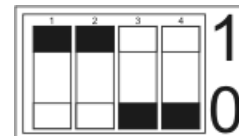
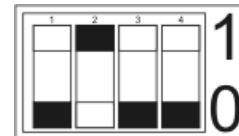
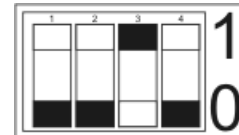
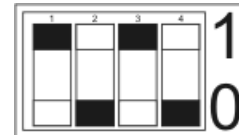
The switches can be flipped up and down to a 1 or a 0 (zero) position with the aid of a paper clip or small pointed object.

(Avoid using pens or pencils as ink and graphite dust can damage the switches.)



With the front of the encoder facing up, verify that the switches are set as shown below for the software that you are using:

- BioGraph Infiniti software in FlexComp Infiniti mode
- TT-USB interface
- Channels A to J 2048 samples/second.
  
- BioGraph Infiniti software in ProComp Infiniti mode
- TT-USB interface
- Channels A & B 2048 samples/second
- Channels C to J 256 samples/second
  
- BioGraph, CardioPro or MultiTrace software
- Pro-SB interface
- Channels A & B 256 samples/second,
- Channels C to H 32 samples/second.
  
- BioResearch software
- Pro-SB interface
- Channels A & B 200 samples/second,
- Channels C to H 20 samples/second.
  
- Neurocybernetics (EEG Spectrum) or NeuroCare Pro software
- Pro-SB interface
- Channels A & B 256 samples/second,
- Channels C to H 32 samples/second.



## General instructions for use

1. Plug the sensors you wish to use into the input connectors on the front of the encoder and connect any required extender cables, making sure to use clean electrodes, onto the sensor head.
2. If appropriate, clean the skin area where the electrodes will be placed.
3. Place the encoder on or near the patient, to avoid signal degradation.
4. Turn the encoder power switch ON and check that the blue power indicator is lit. If it is not, turn the device OFF and check the condition and orientation of the batteries. If the blue indicator starts to flash, there is approximately 20-30 minutes of use left in the batteries (if using alkaline batteries). Keep spare batteries nearby.
5. Start the software program as instructed in the user's manual.
6. After the session, turn the encoder power OFF and disconnect all electrodes.

**Note:** Thought Technology encoders, sensors, and interface units carry parts that may be damaged by static electric discharges. Exercise care when handling this equipment in static-prone environments. Thought Technology instruments are not warranted against damage caused by static discharge. In dry areas or carpeted areas, use anti-static mats or sprays and condition the air by using humidifiers.

## Electrical interference

When performing a biofeedback session, avoid placing the FlexComp Ininiti near the computer, display monitor or any other electrical device, where it can be exposed to electromagnetic fields. Try to keep the encoder within the client's natural electrical field. In most cases, you can do so by fastening the belt-clip to the client's waist.

## After use

As a general rule, remove electrodes from the sensor heads and extender cable leads when you are done using your equipment. Many electrodes are coated with a very conductive substance that can cause the sensor's metal parts to corrode if they are left in contact with it for long periods of time. Be careful, when unsnapping electrodes, not to damage the wires. Avoid twisting and pulling on the wires by holding the sensor head or the extender cable's rounded snap.

## Changing the batteries

### Opening the compartment

Looking at the underside of the FlexComp Ininiti device, you will see a long door in the plastic enclosure.

Holding the encoder with the connectors facing you and with the door up, push lightly down and back with your thumbs on the door to slide it open.



**Attention:** The internal workings of the FlexComp Ininiti encoder are not intended to be opened for repair except by qualified service personnel. The tamper-evident seal under the batteries in the battery compartment should not be removed or broken.

Thought Technology may refuse to honor the unit's warranty if the seal is broken.

### Polarity

When the compartment cover has been slid out, place four AA batteries in the slots, observing the correct battery polarity as embossed on the inside surface of the compartment.

### Closing the compartment

Slide the door back into the FlexComp Ininiti case, gently pushing it in until you feel the click of the locking mechanism.

### Monitoring the battery level

Since each sensor draws a small amount of power from the batteries when connected to the FlexComp Ininiti, it is better to connect only the sensors that are going to be used for a session before you start recording; this will ensure maximal battery life. Most Thought Technology software applications will display a battery power indicator; we recommend that you replace the batteries as soon as this indicator falls below about 50% of the battery power.

**Important:** Remove dead batteries promptly to prevent corrosion damage.

## Caring for the fiber optic cable

A fiber optic (FO) cable is used for transmitting the sensor data to the computer. Although this technology provides maximal electrical isolation, signal fidelity and freedom of movement, some care has to be taken when handling the fiber optic cable, as it is much less flexible than a regular electric wire.



### Winding or bending

It is most important to avoid bending the cable too sharply. In a FO cable, information travels as light impulses. Any kink along the optical fiber may partially or completely block the light's path and, thus, interrupt the flow of sensor information to the computer. When using your system, try to keep the extra length of cable wound in a loose loop no smaller than about 4 inches (10 cm) in diameter.

## Cutting the fiber optic cable

Although the FlexComp Infiniti system is shipped with one short and one long FO cable, the short length is intended to be used as a troubleshooting tool; its short length forces the FlexComp Infiniti to stay too close to the computer. Should you suspect a problem with the long FO cable, replace it with the short one and see if you can establish a good connection. If the system works well with the short cable, then you probably have a break in the longer one.

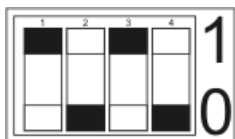
Holding it lightly between your thumb and index fingers, feel along the whole length of the cable, searching for kinks. If you do find a break, the optic fibers may be too damaged to let the light pass properly. Use a sharp box cutter blade to slice the FO cable into shorter unknicked segments. Do not use scissors, because they make a V-shaped cut that may impede the data stream.

## Self-calibration

Over long periods of time or when moving between environments with very different temperature ranges, you can increase the accuracy of your device by running a self-calibration. The encoder contains a built-in voltage reference that possesses good temperature stability and can be used to recalibrate the unit.

### Running a self-calibration

Before you begin, ensure that the encoder's DIP switches have been set to the FlexComp Infiniti mode.



1. Ensure that the encoder's temperature is stable, and is close to the temperature at which you plan to use it. Since certain parameters exhibit temperature drift, self-calibrating the encoder at or near the temperature at which it is used can cancel out any drift that has occurred from another temperature.
2. For best results, replace the batteries if the encoder is showing a low battery warning.
3. Unplug all sensors from the encoder.
4. Press and hold the power switch for 10 seconds, or until the blue LED blinks quickly in a sequence of 3 flashes. Release the power switch as soon as you see the three flashes. Self-calibration will then be initiated. If you continue to hold the button too long, it will not occur.

The self-calibration will continue for about 20-30 seconds, at which point the blue LED will stop flashing and light up steadily as before.

**Note:** If the blue LED flashes quickly for about 1 second before lighting up steadily, this indicates that the self-calibration failed. If this happens repeatedly when you try to self-calibrate the encoder, return it to the manufacturer for service.

### Notes about self-calibration

- Self-calibration requires that you unplug all sensors from the encoder. At the start of the self-calibration procedure, the unit will check for plugged-in sensors and stop the operation if they are detected. DO NOT plug any sensor into the unit after starting self-calibration. Doing so could result in calibration failure or in poor calibration on the affected channel.
- Keep the encoder several feet from active electronic devices such as computers and monitors, and avoid operating wireless devices near the encoder, while it is performing a self-calibration.
- By depressing and briefly holding the power switch during the calibration, but before it finishes, you can cancel the operation. In this case, the new calibration settings will not take effect.
- A successful self-calibration tests most of the signal path of each channel, and gives a high probability that the signal paths are working properly and are properly recalibrated. However it does not test the entire signal path under realistic conditions, and of course it does not calibrate the sensors. If a higher degree of assurance is required that the unit is operating as per its original specifications, you may return it and/or the sensors to the manufacturer for a factory recalibration.

## Self calibration condition codes

The FlexComp Ininiti encoder communicates various conditions by flashing its LEDs. The following table summarizes what these flashes mean during self-calibration.

Encoder Action or Mode	Flash sequence	Interpretation
Normal operation (e.g. just turned on)	BLUE – solid on	Everything normal.
	BLUE – slow flash	Low battery warning: starts when 20 to 30 minutes of battery life remain.
	BLUE – fast flash 1 second, then between 2 and 5 slow flashes (repeated indefinitely)	Internal error. Unit will not function. Return unit for service.
Self-Calibration command (hold power switch for 10 seconds), and ongoing Self-Calibration	BLUE – off, then 3 quick flashes (repeated while Self-Calibration is occurring)	Self-Calibration mode
Self-Calibration, at end	BLUE – changes to steady on.	Successful self-calibration
	BLUE – fast flashing about 1 second, then steady on.	Failed self-calibration.

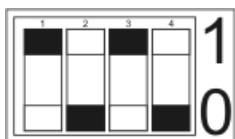
Also see [Impedance checking condition codes](#) and [Compact Flash Card error codes](#).

## Impedance checking

If you are using Z sensors (EEG-Z or MyoScan-Z) from Thought Technology and software that has a compatible impedance checking function (such as BioGraph Ininiti), you can invoke impedance checking from the FlexComp Ininiti encoder.

### Checking impedance

Before you begin, ensure that the encoder's DIP switches have been set to the FlexComp Ininiti mode.



1. Connect the Z sensors to the FlexComp Ininiti encoder.
2. Start the software and follow its instructions to access its impedance checking function.
3. Press and hold the power button for approximately 3 seconds, or until you see the blue LED blink quickly 2 times. Then release the power button. The encoder is now in impedance checking mode.

In this mode, any Z sensors that are plugged into the encoder are commanded one after the other to perform an impedance check. This continues in round-robin order as long as the encoder is in this mode. It takes about 1 second to check impedance for each sensor, and the total time to complete the check depends on the number of sensors plugged into the encoder.

Results are read from the software that you are using.

4. To disengage impedance checking mode, press the power button down for about 3 seconds, or until the blue LED stops blinking.
5. Close the software's impedance checking function.

### Notes about impedance checking

- Sensor readings from the encoder are not valid while impedance checking is occurring, and any traces will be replaced by the signals used in the impedance check process.
- A set of Z sensors all connected to the same encoder will not interfere with each other's impedance check readings, as they are commanded to perform their impedance checks sequentially, and are designed to disconnect from the client while not checking impedance. However, other sensor types that are electrically connected to the client can potentially affect the impedance readings obtained from the Z sensors.
- If possible, leave other electrically connected sensors (such as EMG, EKG, SC) unconnected during Z sensor impedance checking, or else perform a test to see whether their connection causes a significant change in the reading.

- Sensors (even Z sensors) attached to the same client but connected to another encoder also have the potential to affect impedance check readings. In particular, do not attempt to perform impedance checking on two encoders on a single client, at the same time. Here again, test for the effect of other connected sensors if you are concerned about receiving precise impedance readings.

### Impedance checking condition code

The FlexComp Infiniti encoder communicates various conditions by flashing its LEDs. The following table indicates what these flashes mean during impedance checking.

Encoder Action or Mode	Flash sequence	Interpretation
Impedance Check command (hold power switch for 3 seconds), and ongoing Impedance Check.	BLUE – off, then 2 quick flashes (repeated indefinitely)	Impedance Check mode

Also see [Self-calibration condition codes](#) and [Compact Flash Card error codes](#).

### Compact Flash card

A Compact Flash card (CF card) is a data memory card approximately the size of a packet of matches. You can use it with the FlexComp Infiniti encoder as an alternative data storage medium. Session data recorded on the card can be downloaded later to your analysis software. Before you can record to a CF card, it must be formatted and prepared for use with your encoder.

**Note:** Infiniti encoders are delivered with a protective insert in the Compact Flash slot.



To remove the insert, push the button next to the slot once to eject it. The card can then be inserted, as shown. To protect from incorrect insertion the card can be inserted into the device only one way. When inserted properly it is flush with the device rear.

Use the same procedure to remove the card when it is no longer required, and reinsert the protective insert.

### Formatting the Compact Flash card

You do this with the Windows operating system.

1. Connect a CF card reader to your computer and insert the card in it.

Readers come in different sizes and shapes. This picture shows a typical device.

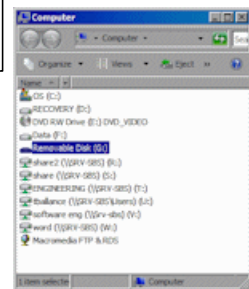


**Note:** It is recommended to temporarily disable any virus scanning utility while formatting the CF card, as this will increase the speed of the process.

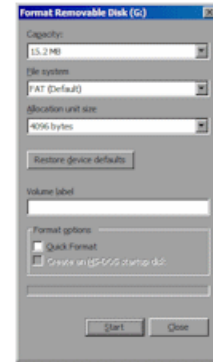
2. Click on **My Computer** on your computer desktop.

You will see a removable disk listed. This is your Compact Flash card.

The drive letter will vary depending on your computer's configuration.



3. Select the removable disk and right-click on it.
4. From the right-click menu, select **Format**.
5. In **Format Removable Disk**, select **FAT** from the **File system** menu, as shown.  
 Select the **Quick Format** check box and then click **Start**.  
 This formats your CF card to the proper format.
6. When formatting is finished, click **Close**.

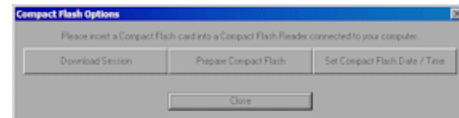


### **Preparing the Compact Flash for use with your encoder**

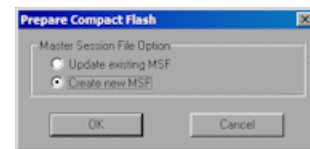
If you are using BioGraph Infiniti software, follow this procedure to prepare a FAT-formatted CF card for use with your FlexComp Infiniti encoder.

Connect the CF card reader to your computer and insert the formatted card in it.

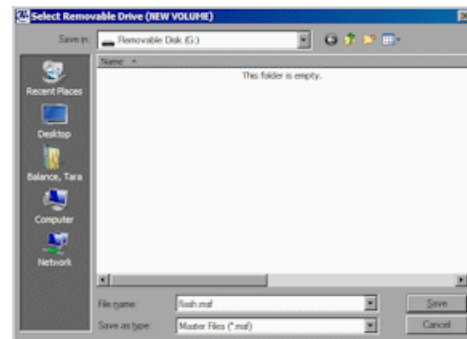
1. Open BioGraph Infiniti.
2. In the Main Menu screen, do one of the following:
  - Click **Compact Flash Options**.
  - From the **Options** menu, select **Compact Flash Options**.
3. In **Compact Flash Options**, click **Prepare Compact Flash**.



4. In **Prepare Compact Flash**, select **Create new MSF** and click **OK**.
5. At the warning prompt, click **Yes**.



6. In the file browsing window, locate and select the removable disk that is your Compact Flash card. The drive letter will vary depending on your computer's configuration.
7. In the **Save** browser window, do the following:
  - a. Ensure that **Save as type** is **Master Files (\*.msf)**.
  - b. In **File name**, type **flash.msf**.
  - c. Click **Save**.



8. At the confirmation prompt, click **OK**.  
 The system builds the master file on the CF card.

9. At the acknowledgement prompt, click **OK** and then click **Close** to exit **Compact Flash Options** and return to the Main Menu screen.

You can now initialize the CF card so that the encoder date and time will be set. (This is optional.)

Your Compact Flash card is now ready for use. This procedure needs to be done only once.

**Note:** Once it has been prepared for use with your encoder, the Compact Flash card cannot be used for other purposes (such as file storage).



## Encoder time setting

The encoder has an internal clock to enable time and date stamping of the sessions recorded onto the CF card. The encoder will retain its time and date when batteries are changed if the fresh batteries are inserted within 30 seconds of removing the old ones. If the time is lost it will reinitialize to January 1 2000. As part of the CF card formatting procedure you may wish to set up the date and time for the encoder, so that sessions can be time stamped for future reference.

To set the date and time with the BioGraph Infiniti software, follow these steps:

1. Insert the CF card into the CF card reader
2. From the BioGraph Infiniti software main screen, select **Compact Flash Options**.
3. Select **Set Compact Flash Date/Time**.
4. Enter the date and time that you will insert the CF card in the encoder.
5. Press **OK** and wait for the operation to complete.
6. If the encoder is off, turn it on.
7. Remove the CF card from the reader and as close as possible to the specified time, insert it into the encoder. The time setting will immediately take effect and set the encoder's internal clock to the specified date and time.

## Questions and answers about Compact Flash time setting

**Question** My batteries have died in my encoder. Will I need to reset my encoder time and date?

**Answer** No. Old batteries, even if they are too dead to operate the encoder, will keep the clock running for a long time. When you do change your batteries, be sure to put in the fresh ones within 30 seconds of removing the old ones, in order to retain the date and time setting.

**Question** My batteries died a number of weeks ago, and they were removed for longer than 30 seconds. How do I reset the time?

**Answer** Follow the directions in [Encoder time setting](#).

**Question** I recorded some sessions after the battery was removed for more than 30 seconds, so the encoder time may have been lost. What date and time will they have?

**Answer** The date and time will be marked as invalid and will not be available for these sessions. For each session recorded with an invalid time, the software will prompt you for the starting time of the session. So if you know that the time is invalid on the encoder, be sure to note the starting time of each session, if this information is important.

## Compact Flash memory usage

When a Compact Flash card is inserted in the unit (or the unit has been turned on with a CF card inserted) and is recognized as a valid CF card, the white LED lights up for about 1 second, then blinks in a single burst, a number of times to indicate available space.

	Memory Remaining										
Initial	0%	10%	20%	30%	40%	50%	60%	70%	80%	90%	100%
1 sec.	0	1	2	3	4	5	6	7	8	9	10

The white LED then goes out, awaiting a switch command. If no space remains on the CF card, the white LED lights up only for the initial 1second. This sequence is replayed when the dipswitch is changed.

If the card is not recognized as a valid CF card, the white LED flashes quickly (about 10 times per second) for between 1 and 2 seconds, then blinks slowly a number of times indicating an error code. The error code blink is repeated a total of 3 times. The white LED then goes out.

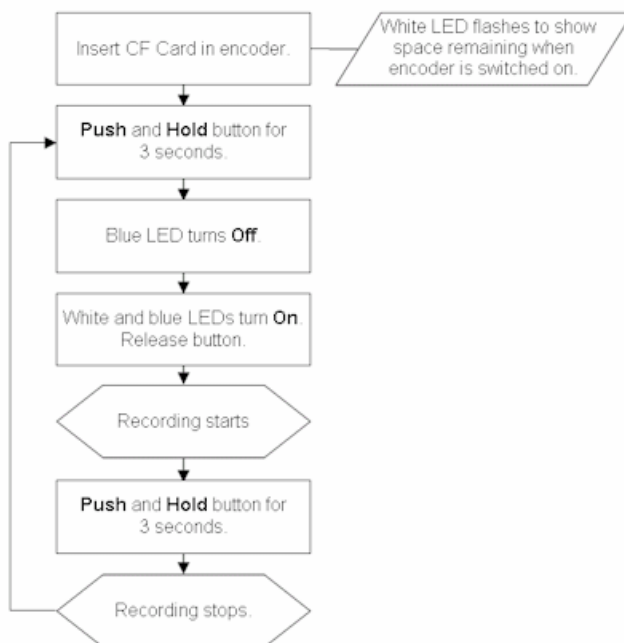
## Compact Flash card error codes

The FlexComp Ininiti encoder communicates various conditions by flashing its LEDs. The following table summarizes what these flashes mean when using a CF card.

Encoder Action or Mode	Flash sequence	Interpretation
CF card – just inserted	WHITE – Long blink (about 1 second), then flashes 1 to 10 times	CF card recognized and ready to record, with each flash indicating 10% of remaining capacity (e.g. 4 flashes indicate 40%).
	WHITE – Long on period (about 1 second), then no blinks	CF card recognized, but no space left (zero blinks).
	WHITE – Fast flashing (about 1 second), then between 2 and 6 slow flashes. The entire sequence is repeated 3 times.	Compact Flash Error, as follows: <b>2 flashes:</b> internal error. Return unit for service on CF card function. <b>3 flashes:</b> CF card detected but not recognized. <b>4 flashes:</b> CF card not properly formatted. Try reformatting CF card. <b>5 flashes:</b> CF card format not supported. Format CF card under an earlier format version, or upgrade encoder firmware. <b>6 flashes:</b> inconsistent format data in CF card. Try reformatting CF card.
CF card Record Command (hold power switch until white LED turns on, about 2 seconds).	WHITE – turns on and stays on as long as button is pressed, then flashes 1 to 10 times.	Recording in process. Each flash indicates 10% of remaining capacity (e.g. 4 flashes indicate 40%)

Also see [Self-calibration condition codes](#) and [Impedance checking condition codes](#).

## Recording data to a Compact Flash



- Recording to the CF card is started by pressing and holding the encoder power button for about 3 seconds, or until the white LED turns on.
  - First, the blue LED will turn off, and releasing the button during this period will cause the encoder to turn off.
  - After the white LED turns on, you can release the button.
- At this point, the white LED turns off, then outputs the same sequence as described above.

- The CF Record command is entered if a CF card is inserted and recognized as a valid CF card, and at least one sensor has been plugged in.
  - If the CF card is recognized but there is no sensor plugged in, the white LED will never turn on.
3. During the recording, the CF LED blinks to indicate the percentage of the total CF storage space, which remains available for recording.  
It blinks in groups of 1 to 10 flashes. 1 flash = 10% remaining, 10 flashes = 100% remaining.
  4. CF Record is stopped by pressing and holding the button for about 1 second, or until the white LED turns and stays on, then release the button.
  5. If the CF card is full or the CF card is removed during the recording, the unit will stop the recording itself. With removal a maximum of 1 second of recording will be lost.

**Attention:** *Do not remove the CF card without first stopping recording. If the CF card is removed during recording, generally only the last second will be lost; however there is a small risk of greater data loss.*

Refer to your software manual for detailed information on transferring sessions from the Compact Flash card to the computer.

# Hardware Specifications

## FlexComp Infiniti (SA7550)



<b>Size (approx.)</b>	130mm x 95mm x 37mm (5.1" x 3.7" x 1.5")
<b>Weight (approx.)</b>	200g (7oz)
<b>Power source</b>	4AA batteries, single use alkaline or NiMH Rechargeable
<b>Supply voltage</b>	3.6V – 6.5V (fiber optic), minimum 4.0V (Compact Flash)
<b>Battery life, Alkaline cells</b>	30h typical, 20h minimum
<b>Low-battery warning</b>	20 – 30 minutes of battery life remaining
<b>Sensor supply voltage</b>	7.260V ± 2mV
<b>ADC output</b>	14bits
<b>Full-scale input range, DC</b>	2.8V±1.696V
<b>LSB magnitude</b>	207µV
<b>Encoder channel bandwidth (3dB) and sample rate</b>	DC – 512Hz @ 2048 samples/second DC – 64Hz @ 256 samples/second DC – 64Hz @ 200 samples/second DC – 8Hz @ 32 samples/second DC – 8Hz @ 20 samples/second
<b>Anti-aliasing filter</b>	5th order Butterworth
<b>Alias rejection</b>	30dB typical
<b>DC gain accuracy</b>	±0.5% (initial, or after self-calibration)
<b>DC offset</b>	±3LSB (initial, or after self-calibration)
<b>Overall system accuracy</b>	5%
<b>Offset drift, calibration temperature ±10C</b>	±5 LSB
<b>Encoder noise</b>	150µVRMS, 1mV p-p typical, offset removed

**Note:** FlexComp Infiniti and its sensors are sensitive electronic instruments and should be handled as such. Be especially careful to avoid both pulling on the electrode cable and getting moisture or electrode gel on the sensor snaps. If necessary, wipe the surface with a damp cloth or use a moistened Q-tip to remove gel from inside the sensor snaps. Wipe with a dry cloth.

### Infiniti hardware copyright notice

This hardware contains proprietary embedded software code, which is the property of Thought Technology Ltd.; it is provided under a license agreement containing restrictions on use and disclosure and is also protected by copyright law. Reverse engineering of the software or the resulting output data stream is prohibited.

Due to continued product development the embedded software may change without notice. The information and intellectual property contained herein is confidential between Thought Technology Ltd. and the client and remains the exclusive property of Thought Technology Ltd.

If you find any problems in the documentation, please report them to us in writing. Thought Technology Ltd. does not warrant that this document is error-free.

No part of this publication may be reproduced, stored in a retrieval system, or transmitted in any form or by any means, electronic, mechanical, photocopying, and recording or otherwise without the prior written permission of Thought Technology Ltd.

ProComp2™, ProComp5 Ininiti™, ProComp Ininiti™, FlexComp Ininiti™, BioGraph® are trademarks of Thought Technology Ltd.

© Copyright Thought Technology 2003-2011

# Reference

## Warranty

The FlexComp Infiniti system and all equipment including optional items are guaranteed to be free from defects in material and workmanship for 1 year from the date of purchase.

In the unlikely event that repair is necessary, call Thought Technology Ltd. to receive a Return Authorization. Then send the unit back by a traceable method – Thought Technology will not be responsible for items not received. We will repair or replace your unit(s) free of charge.

This warranty does not apply to damage incurred through accident, alteration, or abuse, nor to sensor damage created by static electricity. Do not use this equipment in dry, static area unless using an anti-static mat or anti-static spray on carpeted areas.

Thought Technology may refuse to honor this warranty if the tamper-evident seal located in the battery compartment is broken.

<b>Important:</b> <i>Remove dead batteries promptly to prevent corrosion damage.</i>
--

### **Optional extended warranty**

Please contact Thought Technology Ltd. for further details.

## Contacting Thought Technology

### **Placing orders**

- **Outside USA**

**Tel:**                    (514) 489-8251

**Fax:**                    (514) 489-8255

- **In USA Toll-Free**

**Tel:**                    1-800-361-3651

**E-mail:**                [mail@thoughttechnology.com](mailto:mail@thoughttechnology.com)

### **Technical support**

For technical support please refer to the Thought Technology Ltd website at [www.thoughttechnology.com](http://www.thoughttechnology.com) for frequently asked questions. If your support issue is not covered please e-mail or call technical support at the telephone number below.

**E-mail:**                [techsupport@thoughttechnology.com](mailto:techsupport@thoughttechnology.com)

**Tel:**                    (514) 489-8251

### **Returning equipment for repair**

Before returning the equipment, first please contact our service department and get an authorization number (RA number).

**Tel (USA and Canada):**    (800) 361-3651, ext 130

**Tel (Overseas):**        +1 514-489-8251, ext 130

**E-mail:**                [service@thoughttechnology.com](mailto:service@thoughttechnology.com)

Then fill in the return form (the form can be found on the next page). You must provide a detailed description of the problem you are experiencing, and your telephone/fax number and e-mail.

The unit(s) must be sent **postage prepaid** and **insured**, with proof of purchase to one of the addresses on the following page.

All customs and duties charges will be billed to the customer if incurred by sending the unit to the **wrong** address.

- **In the USA**, ship insured to:

Thought Technology Ltd.  
Cimetra LLC  
8396 State Route 9  
West Chazy, New York  
12992 USA

- **In Canada**, ship insured to:

Thought Technology Ltd.  
8205 Montreal/Toronto Blvd., Suite 223  
Montreal West, Quebec  
Canada H4X 1N1

- For **overseas**:

Package must be marked with "Broker: Livingston International – 133461".

Ship insured to:

Thought Technology Ltd.  
8205 Montreal/Toronto Blvd., Suite 223  
Montreal West, Quebec  
Canada H4X 1N1

**Repair return form**

Be sure to call for authorization before returning any equipment!

Copy and complete this form and include it with the unit(s).

Include a copy of original invoice and return to the address in the [Returning equipment](#) section.

**Name** \_\_\_\_\_

**Company** \_\_\_\_\_

**Address** \_\_\_\_\_

\_\_\_\_\_

\_\_\_\_\_

**Phone No.** \_\_\_\_\_

**Fax No.** \_\_\_\_\_

**Date Purchased** \_\_\_\_\_

**From Whom** \_\_\_\_\_

\_\_\_\_\_

**Model Name** \_\_\_\_\_

**Serial No.** \_\_\_\_\_

**Problem** \_\_\_\_\_

\_\_\_\_\_

\_\_\_\_\_

\_\_\_\_\_

\_\_\_\_\_

\_\_\_\_\_

\_\_\_\_\_

\_\_\_\_\_

\_\_\_\_\_

\_\_\_\_\_

\_\_\_\_\_

\_\_\_\_\_

\_\_\_\_\_

\_\_\_\_\_